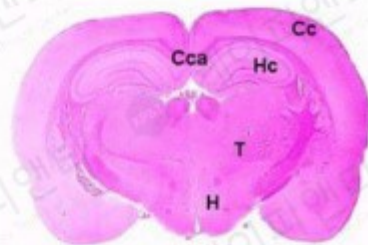
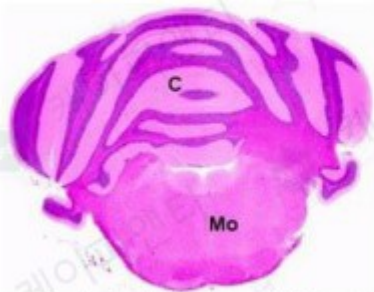


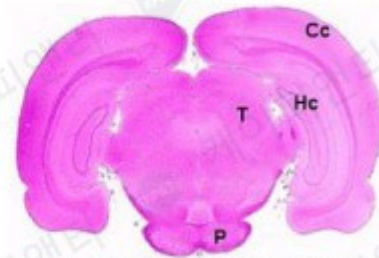
Brain, localization 1, cerebrum.



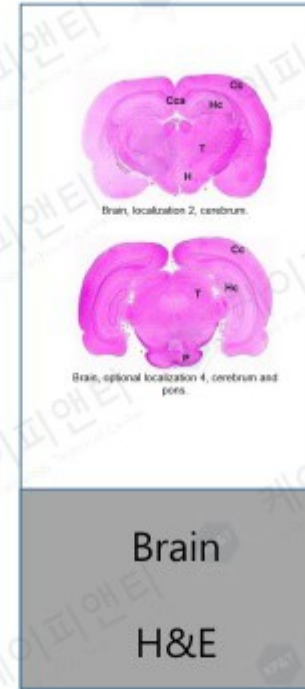
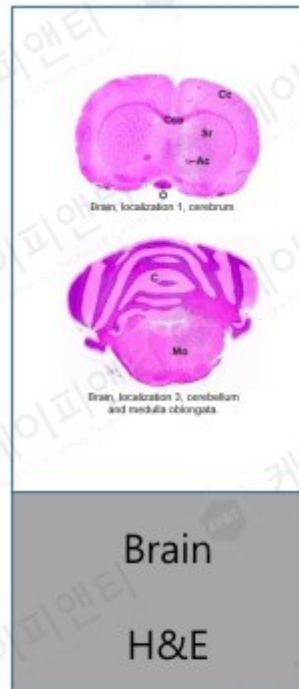
Brain, localization 2, cerebrum.



Brain, localization 3, cerebellum and medulla oblongata.

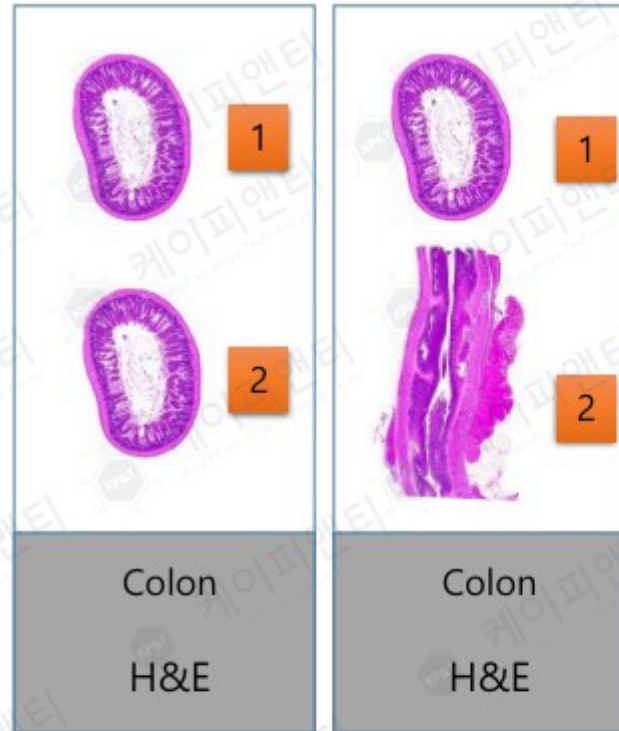


Brain, optional localization 4, cerebrum and pons.



Brain

- 목표 검체제작 부위에 따라 제작
- Ac: anterior commissure, C: cerebellum, Cc: cerebral cortex, Cca: corpus callosum, H: hypothalamus, Hc: hippocampus, Mo: medulla oblongata, O: optic chiasm, P: pons, Sr: striatum, T: thalamus.



Colon

- 용모를 관찰할 수 있도록 Cross Section 및 Longitudinal Section으로 제작

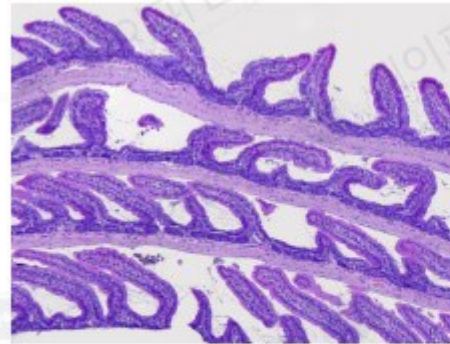


Intestine

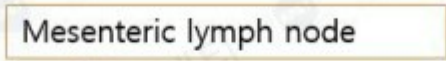
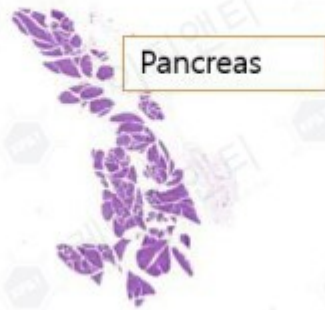
H&E

Swiss Roll 제작

- 제작 방법: 고정이 완전히 이루어지기 전 Swiss Roll로 제작

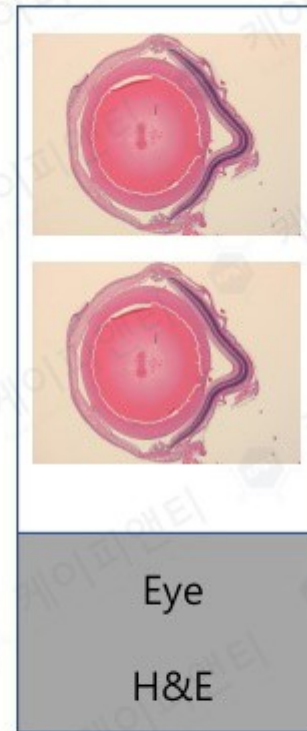
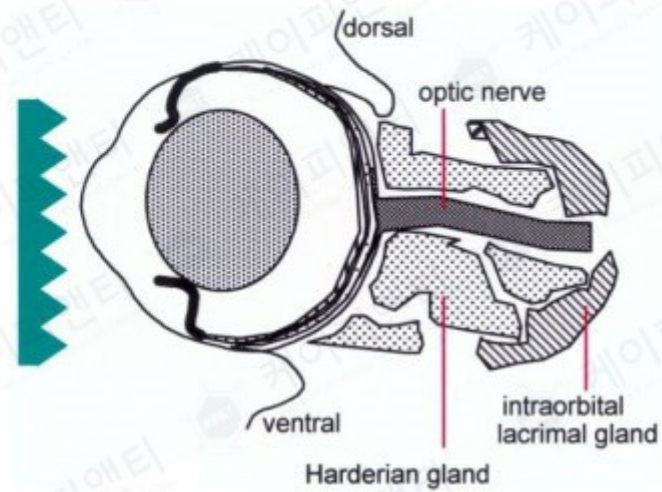


Large Intestine 슬라이드 스캔 이미지



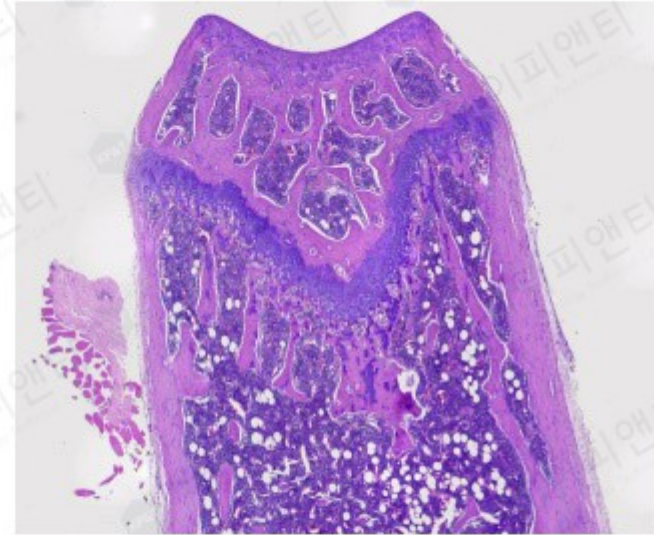
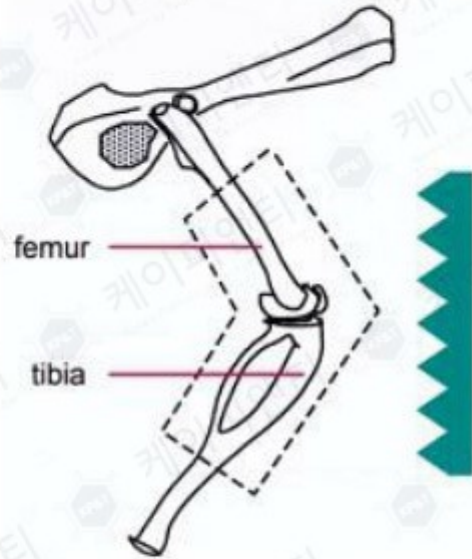
Large Intestine

- 각 위치가 포함될 수 있도록 제작



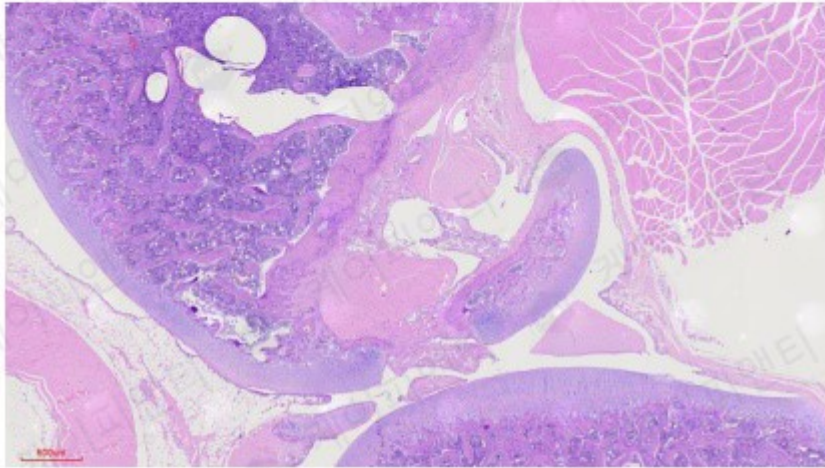
Eye

- 안구 전체를 관찰할 수 있도록 시신경을 포함하여 제작
- David's 및 Bouin's 고정액 사용

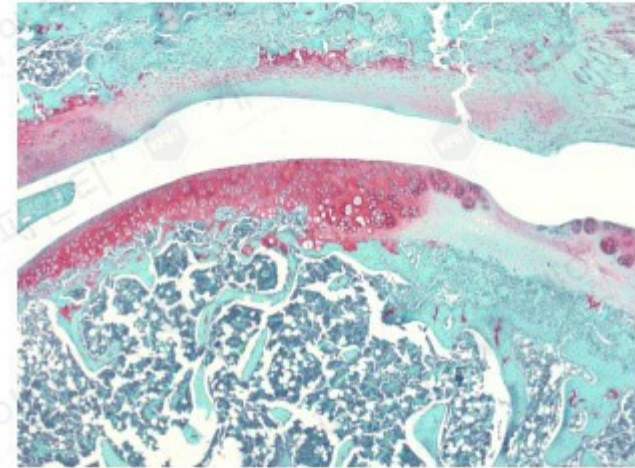


Joint(Femur & Tibia)

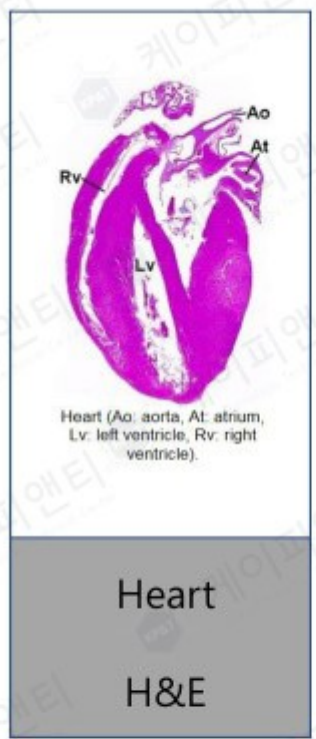
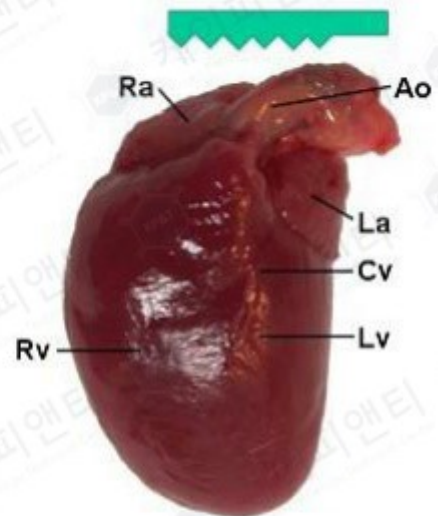
관절 및 연골이 관찰되도록 제작



H&E stain

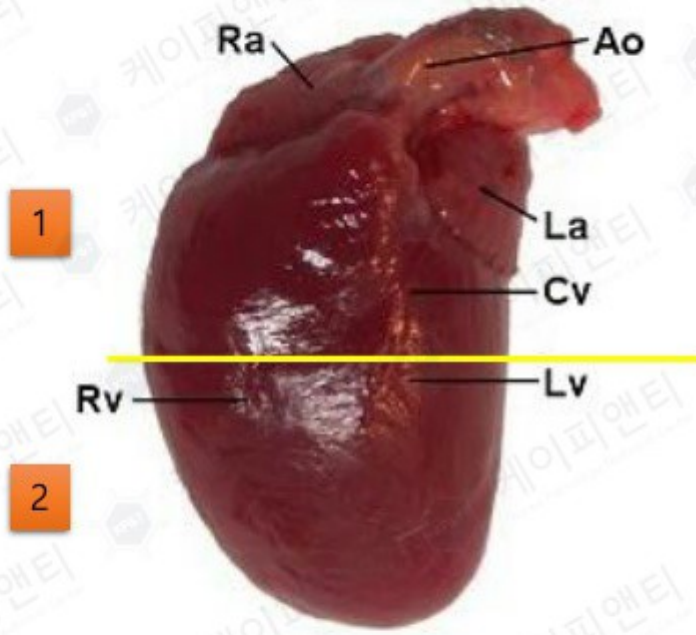


Safranin O stain

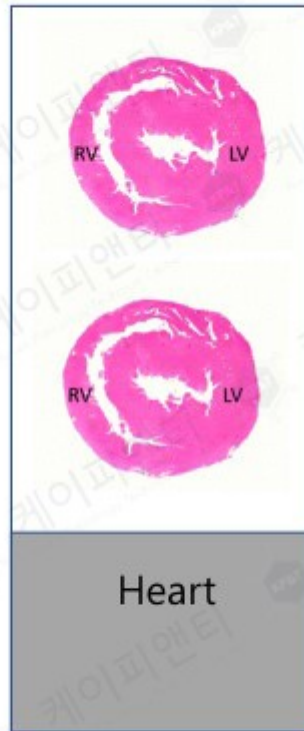


Heart

- 좌심실, 우심실, 중격, 심이가 모두 나오도록 Coronal Section으로 제작



1



2

중양을 자른 후 1번, 2번 위치를 하나의 블록에 제작



1



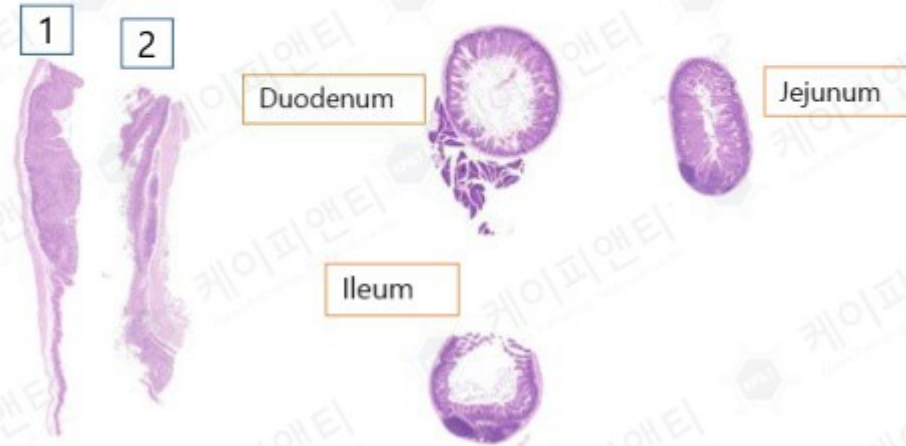
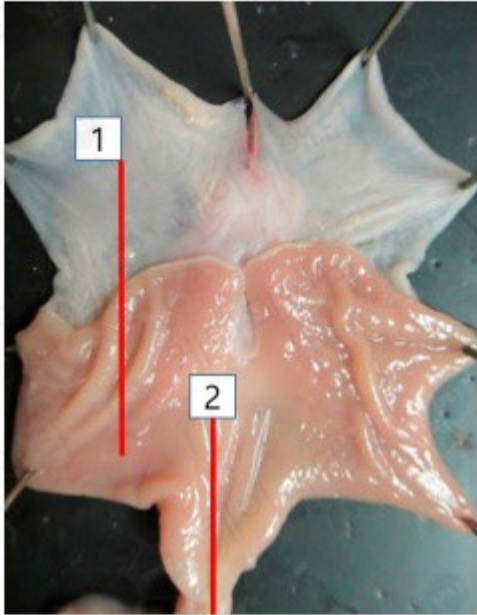
2

Aorta

H&E

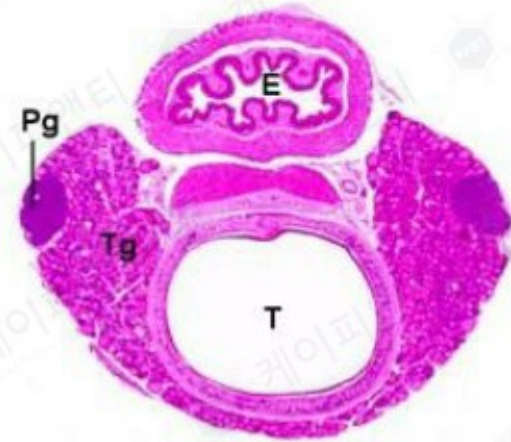
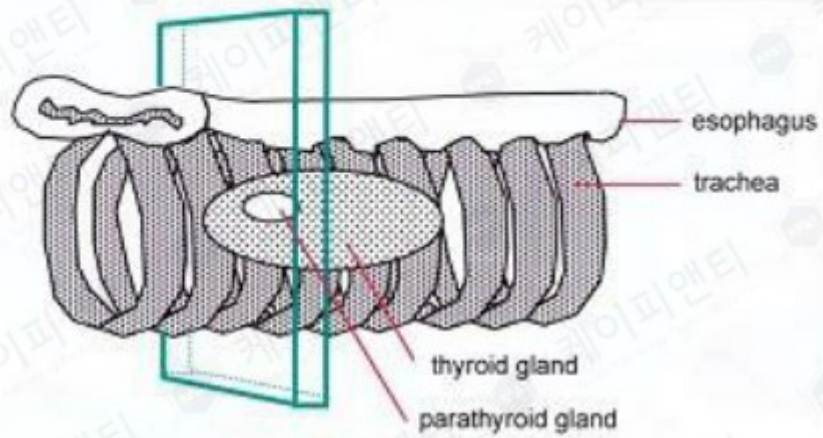
Aorta

- 시험 부위 2부분을 Cross Section으로 하나의 블록에 제작



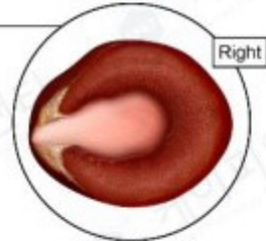
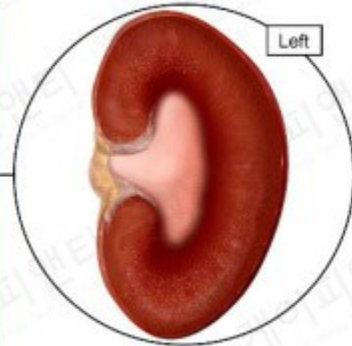
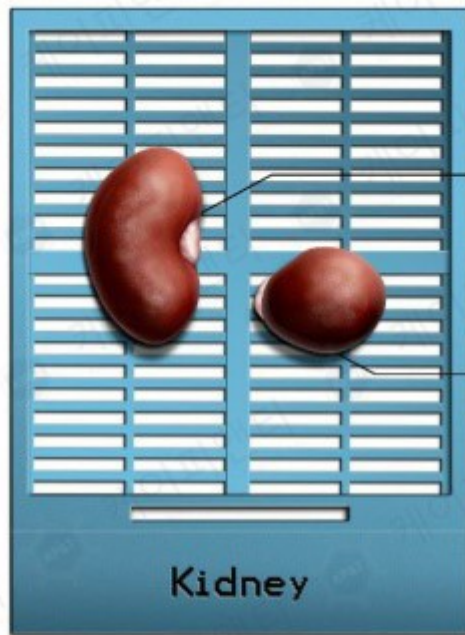
Stomach + Small Intestine

- Forestomach, Gastric fundus를 포함하여 각 위치를 제작

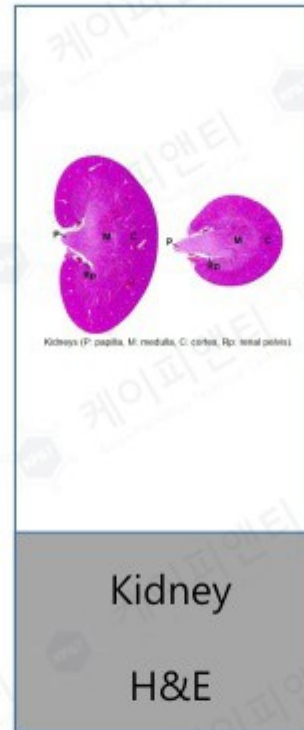


Esophagus

- 형태를 관찰할 수 있도록 Cross Section

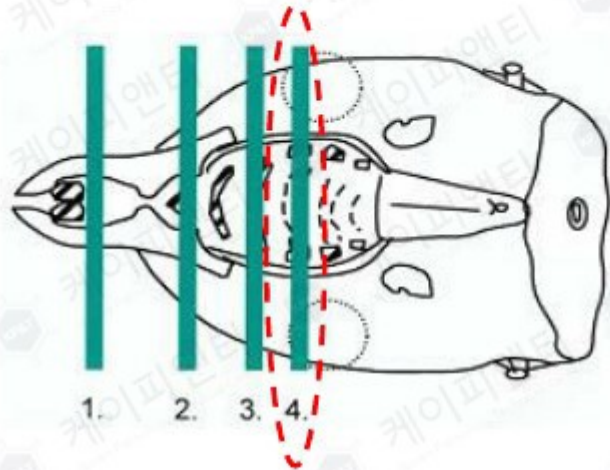


cut surface faces down in cassette

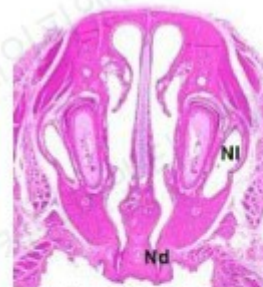


kidney

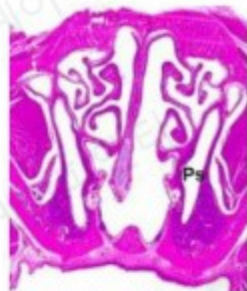
- 수질과 피질을 확인할 수 있도록 Cross, Longitudinal 단면으로 제작



Nasal cavity, rat, location 1.



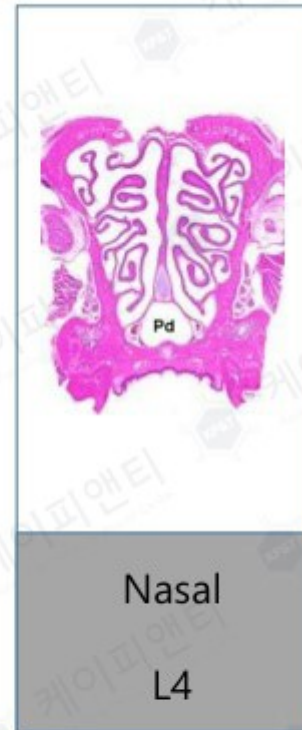
Nasal cavity, rat, location 2.
Nd: nasopalatine (incisive) duct
NI: nasolacrimal duct.



Nasal cavity, rat, location 3.
Ps: paranasal sinus.

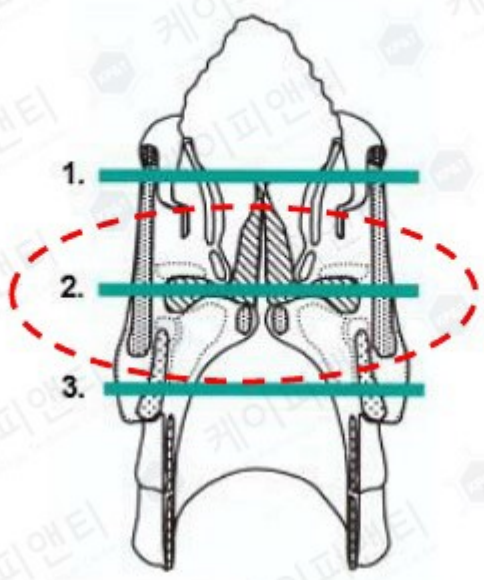


Nasal cavity, rat, location 4.
Pd: pharyngeal duct (nasopharynx).



Nasal Cavity

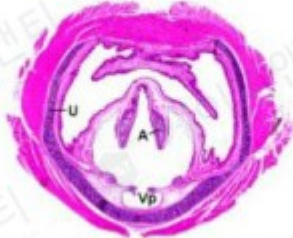
- Level 4 부분을 제작



Larynx
H&E



Larynx, level 1.
Sg: seromucinous glands at the base of the epiglottis.



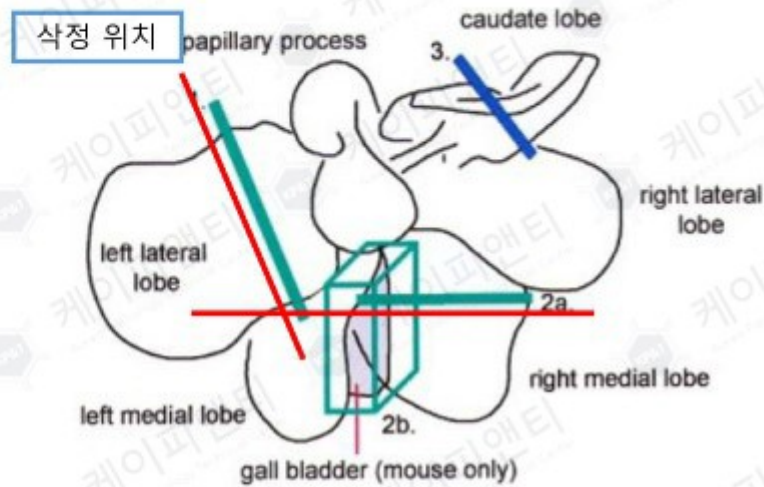
Larynx, level 2. Vp: ventral pouch, A: processes of the arytenoid cartilages, U: u-shaped cartilage.



Larynx, level 3. C: cricoid cartilage.

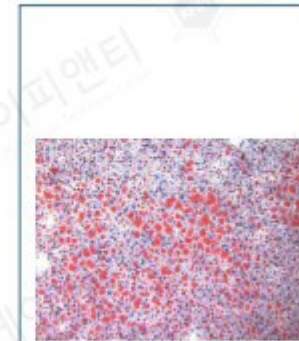
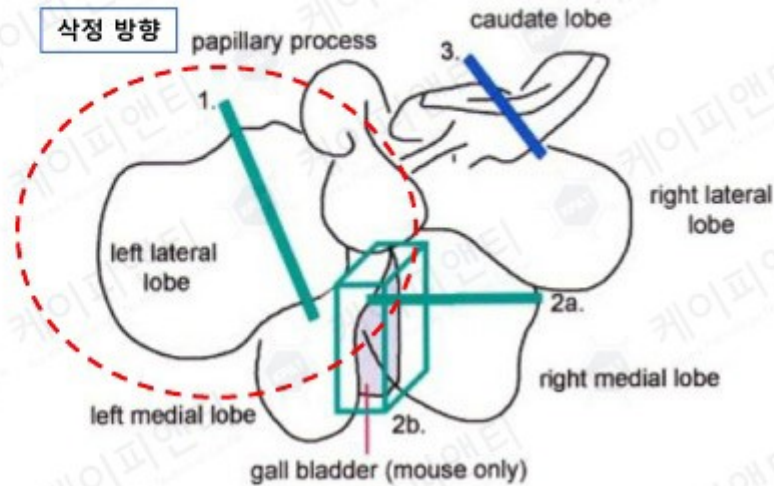
Larynx

- Ventral pouch, Arytenoid Cartilages를 관찰할 수 있도록 Level 2 제작



Liver

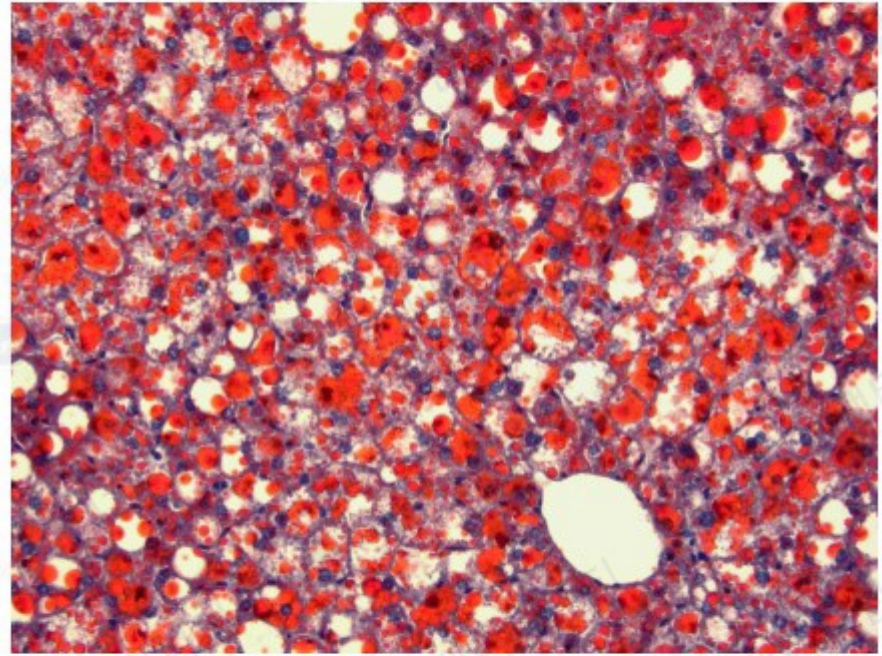
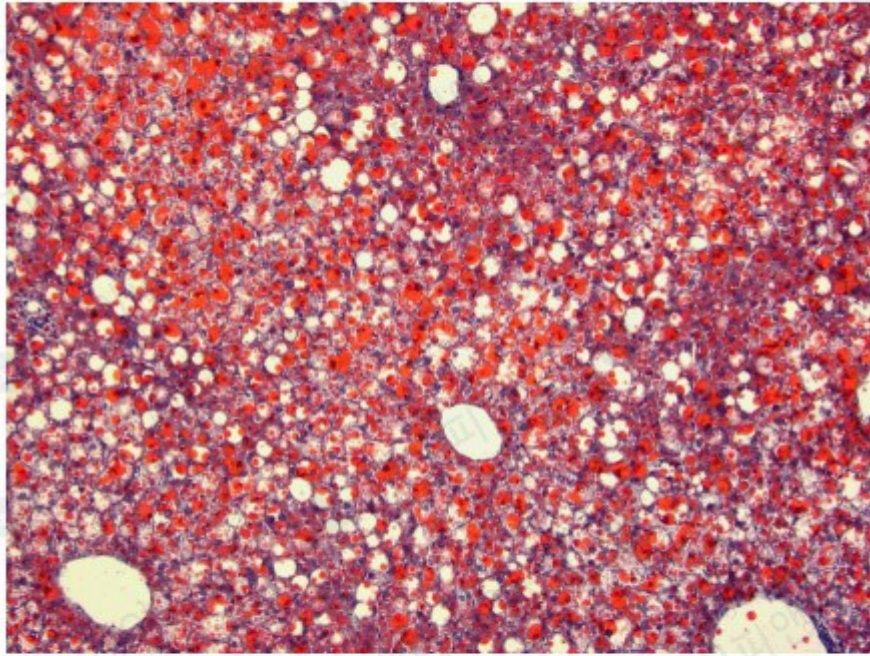
- Left lateral: 간문맥을 관찰할 수 있도록 제작
- Median: 담낭을 포함하여 제작



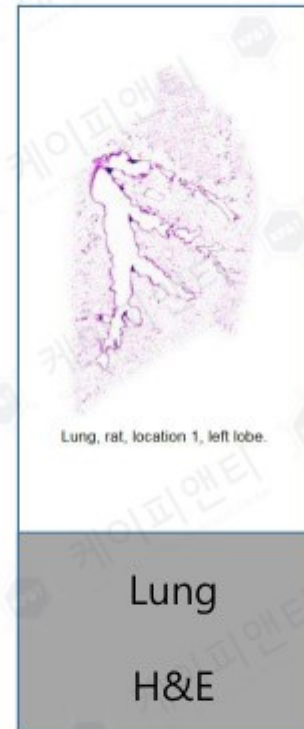
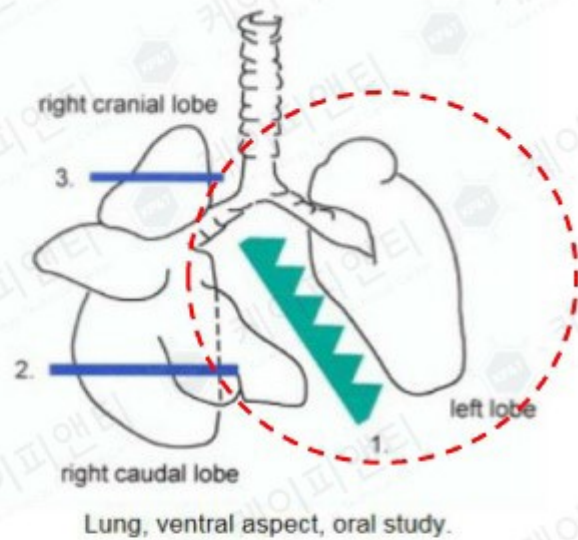
Liver
Oil red O

Liver Oil red O stain 제작 방법

- 색정: 좌엽을 간문맥을 중심으로 색정
- 10% NBF에 고정된 조직을 30% Sucrose 처리
- 동결블록(Cryoblock) 제작 후 박절하여 Oil red O stain 진행

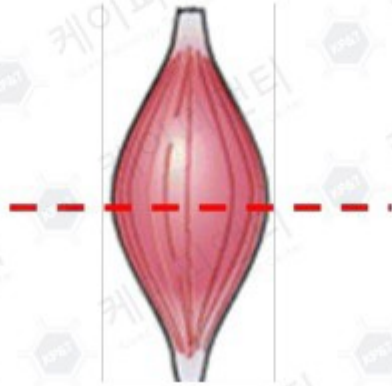


Oil red O stain 염색 결과



Lung

- 좌엽을 기관지를 볼 수 있도록 그대로 포매



Muscle

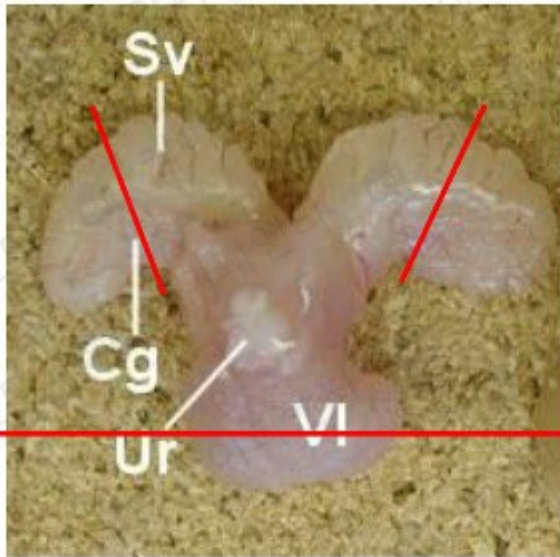
근육이 Ring 형태로 보이도록 Cross Section



Muscle

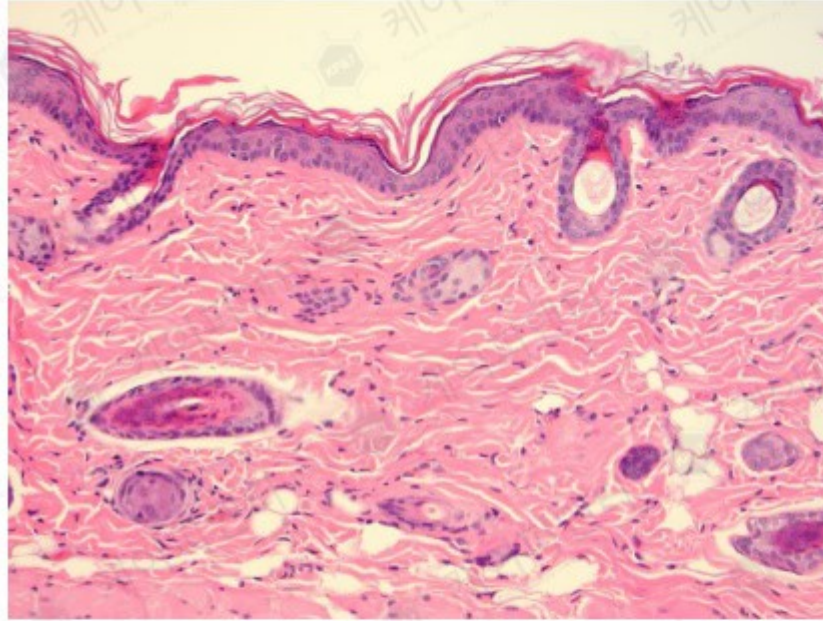
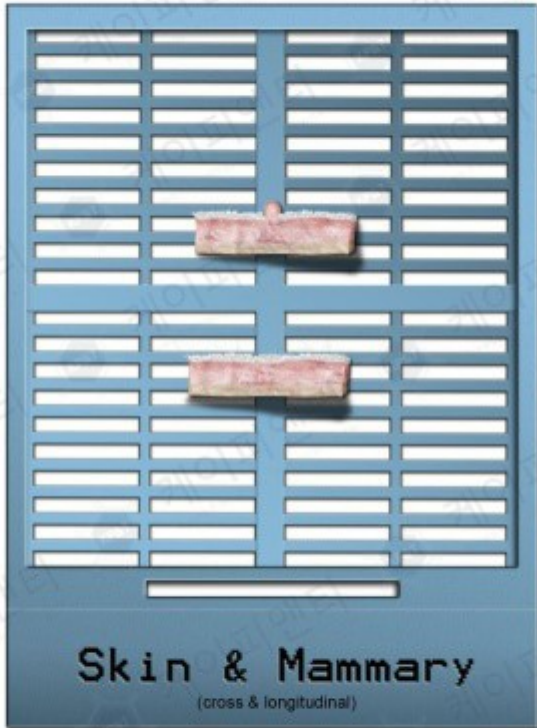
H&E





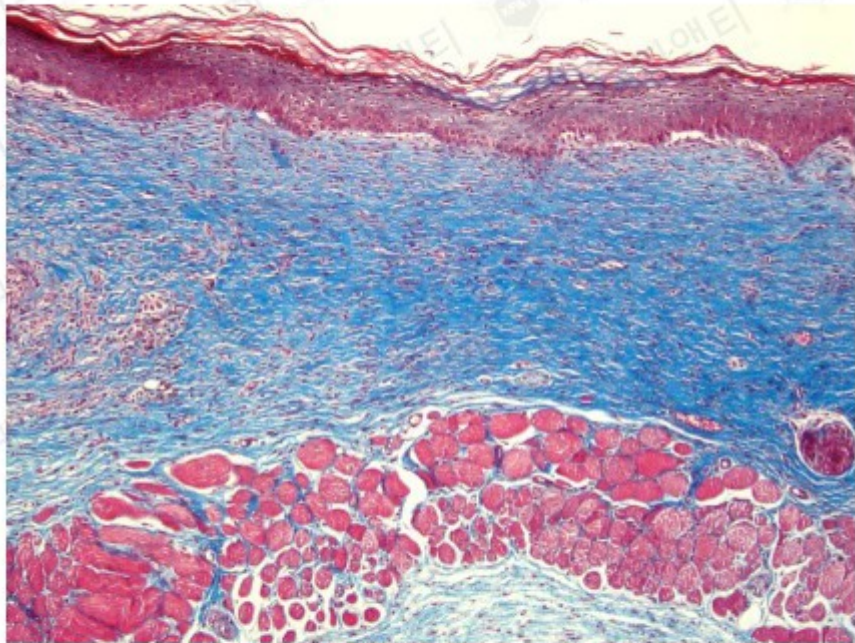
Prostate, Seminal Vesicle

- Prostate: Cross Section
- Seminal Vesicle: Cross Section

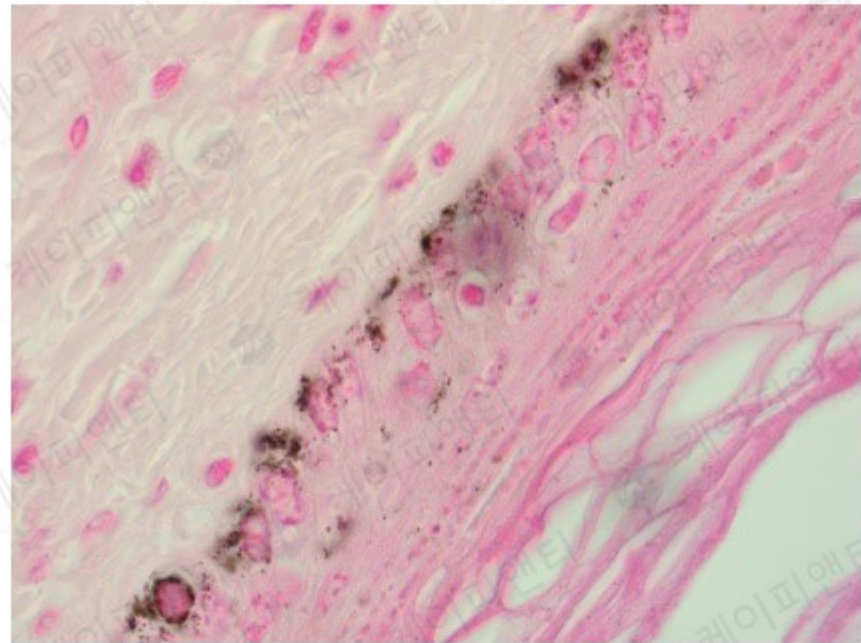


Skin

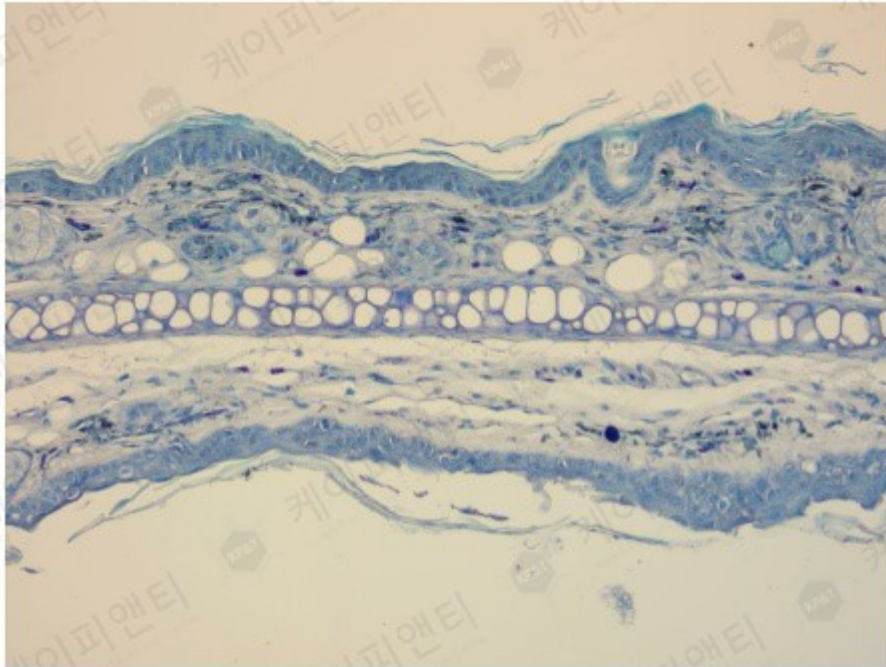
피부 전체층이 관찰되도록 제작



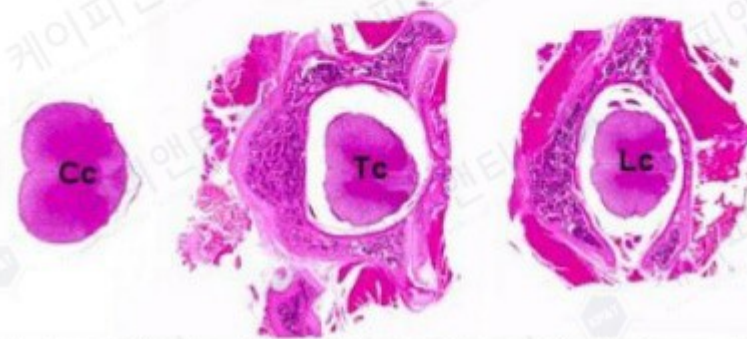
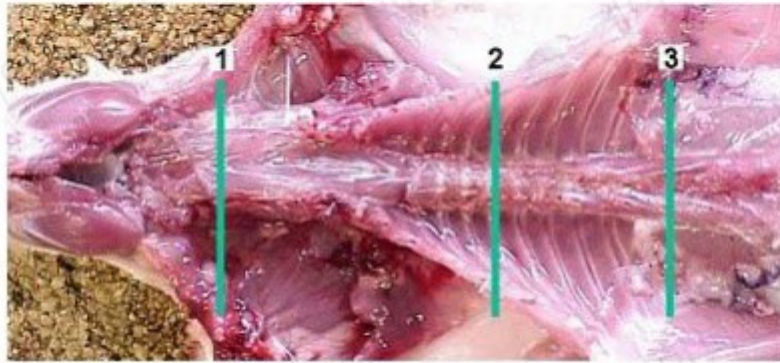
Masson's Trichrome Stain (아교섬유 염색)



Fontana-Masson Stain (멜라닌 염색)



Toluidine blue Stain (Mast Cell 염색)



Spinal cord (Cc: cervical cord, Tc: thoracic cord, Lc: lumbar cord).
Option without bone shown for the cervical cord.

Spinal Cord

- 시험 부위에 맞는 위치를 제작, Cross Section
- 척추 뼈는 제거 후 의뢰 및 제작 진행



삽정 위치



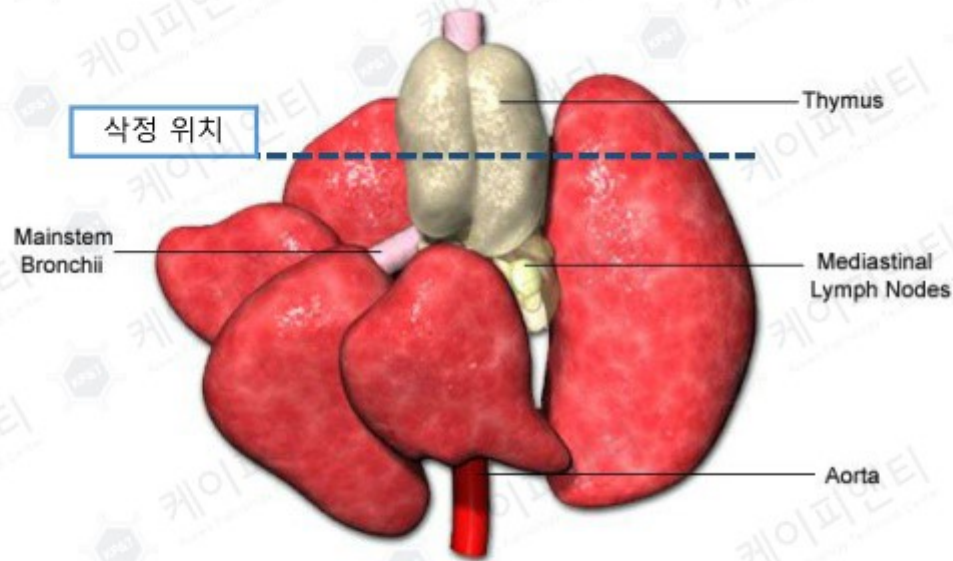
Spleen

H&E

Spleen

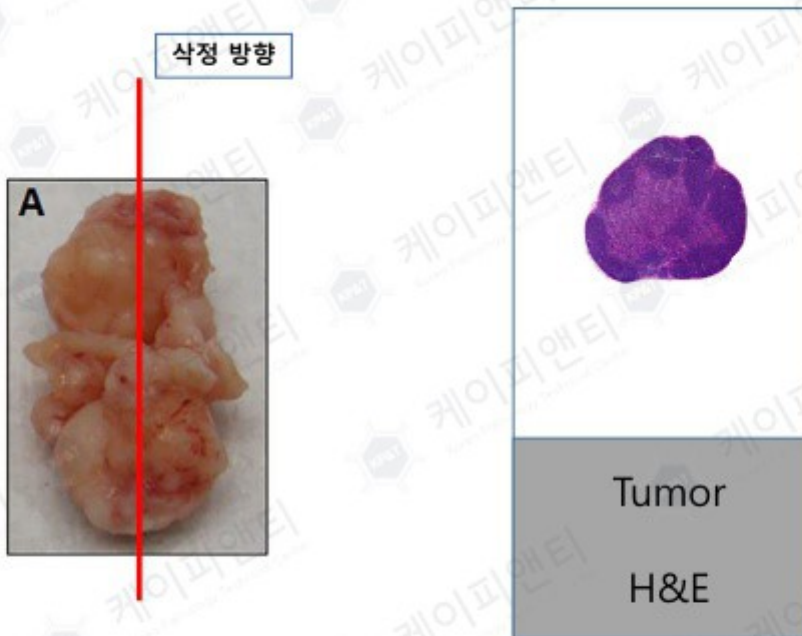
- 비문을 관찰할 수 있도록 제작

Thoracic Pluck



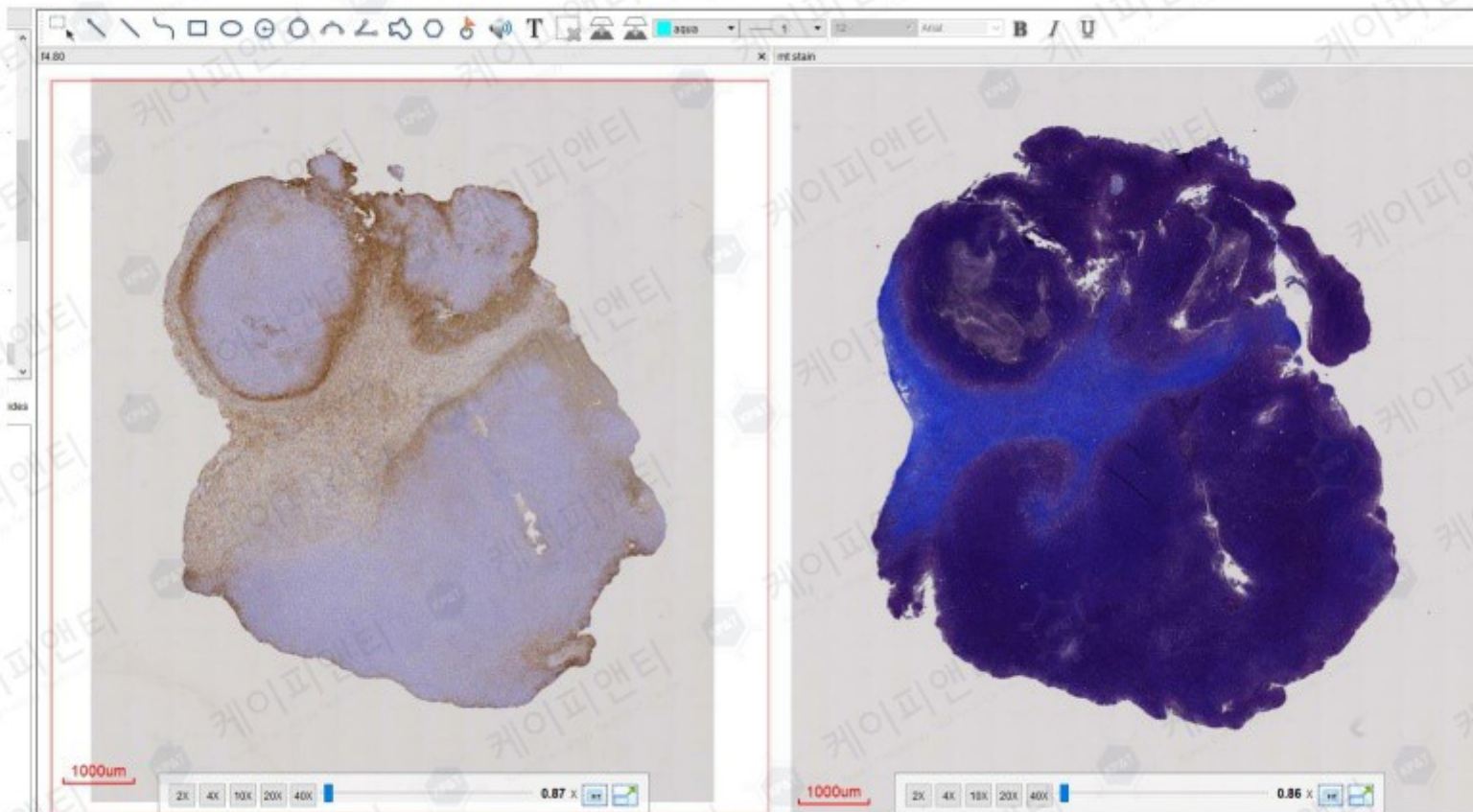
Thymus

- Cortex, Medulla를 관찰할 수 있도록 Cross Section



Tumor

- Tumor: 가장 넓은 단면이 나올 수 있도록 제작
- 요청에 따라 피부 단면을 포함하거나 포매 방향 설정



슬라이드 스캔을 통한 이미지 확인

표1. 식정 방법 (대동물)









식정 방법	
<p>Brain</p> 	<p>Thymus</p> 
<p>Note : 1-소뇌 2-뇌간 3-대뇌</p>	<p>Note :</p>
<p>Pancreas</p> 	<p>Adrenal glands(Left, Right)</p> 
<p>Note :</p>	<p>Note : 수질이 포함되도록 식정한다.</p>
<p>Thyroid& Parathyroid glands(Left, Right)</p> 	<p>Pituitary gland</p> 
<p>Note : 부갑상선이 포함되도록 식정한다.</p>	<p>Note : 그대로 카세트에 넣는다.</p>
<p>Esophagus</p> 	<p>Trachea</p> 
<p>Note :</p>	<p>Note :</p>

표2. 식정 방법 (대동물)






식정 방법	
<p>Submandibular glands(Left, Right)</p> 	<p>Submandibular lymph node(Left, Right)</p> 
Note :	Note :
<p>Mesenteric lymph node</p> 	<p>Spleen</p> 
Note :	Note :
<p>Heart</p> 	
Note :	

표3. 식정 방법 (대동물)









식정 방법	
<p>Liver&Gall bladder</p> 	<p>Kidney(Left, Right)</p> 
<p>Note : 담낭이 포함되도록 식정한다.</p>	<p>Note :</p>
<p>Lung</p> 	<p>Urinary bladder</p> 
<p>Note : 기관지가 포함되도록 식정한다.</p>	<p>Note :</p>
<p>Skin/Mammary gland</p> 	<p>Tongue</p> 
<p>Note : 유두가 포함되도록 식정한다.</p>	<p>Note :</p>
<p>Eyes&Optic nerve(Left, Right)</p> 	<p>Spinal cord</p> 
<p>Note : 시신경이 포함되도록 식정한다.</p>	<p>Note :</p>

표4. 식정 방법 (대동물)







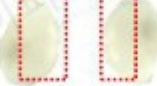


식정 방법	
<p>Stomach/Duodenum</p>  <p>분문부</p> <p>기저부</p> <p>유문부</p> <p>십이지장</p> <p>Note :</p>	<p>Ileum/Cecum/Colon</p>  <p>맹장</p> <p>결장</p> <p>회장</p> <p>Note :</p>
<p>Jejunum</p>  <p>Note :</p>	<p>Rectum</p>  <p>Note :</p>
<p>Sternum</p>  <p>Note :</p>	<p>Femur</p>  <p>Note :</p>

표5. 식정 방법 (대동물)

식정 방법	
Testis(Left, Right) 	Epididymis(Left, Right) 
Note :	Note :
Prostate 	Uterus 
Note :	Note :
Vagina 	Ovary 
Note :	Note :
Sciatic nerve/Skeletal muscle 	Larynx 
Note :	Note :